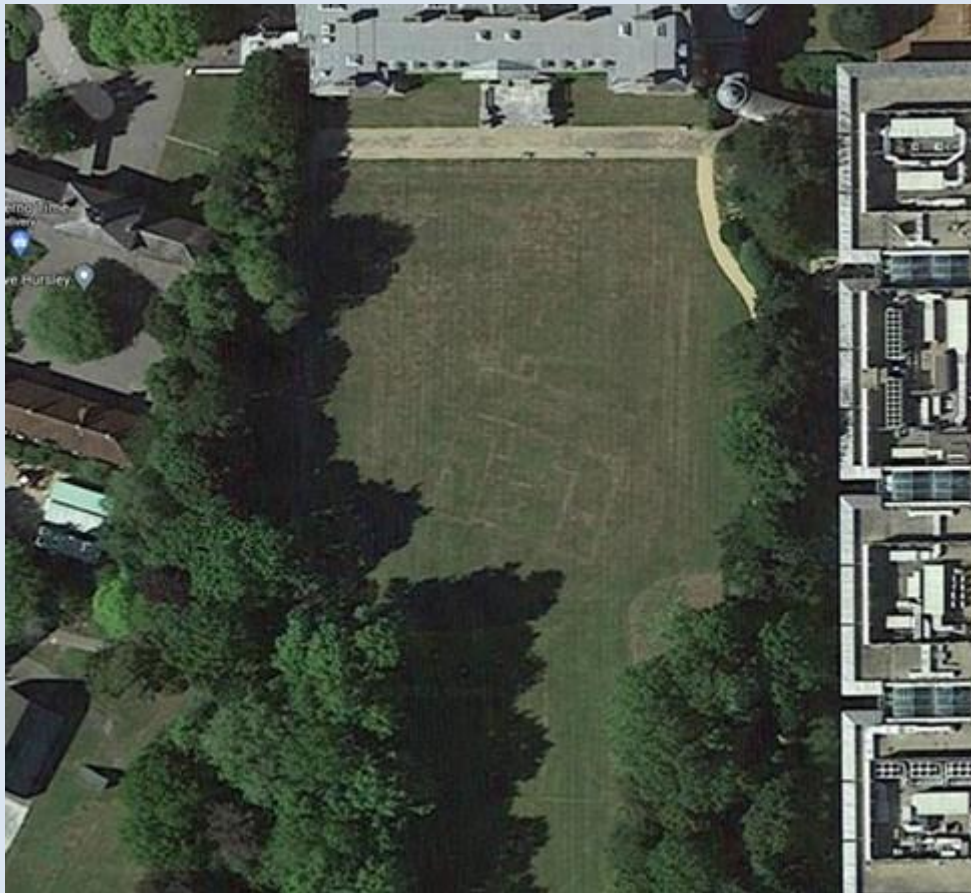


WARG Big Dig 2021

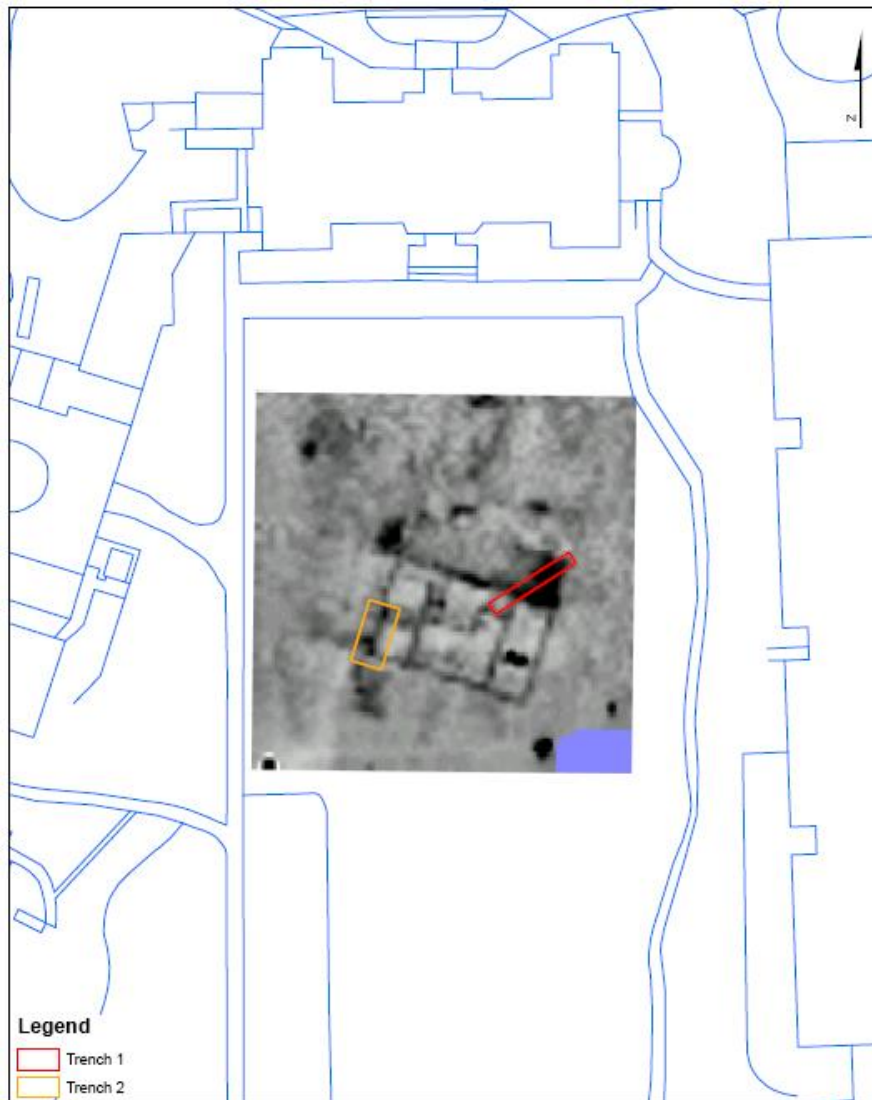
We are going to IBM Hursley for the Big Dig in 2021! Clearly there are some changes as a result of the pandemic but we believe we have a safe environment to carry out all our usual activities.

The site is wonderful in the grounds of Hursley house (now part of the IBM site). In the lawn in front of the current grand house you can see crop marks of a much earlier Tudor building. We can clearly see the building hidden under the grass and our task this year is to understand what remains of this Tudor house.



Current © Google image

We have undertaken all the usual geophysical analysis and not surprisingly it bears a very close resemblance to the crop marks. We will dig initially 2 trenches on archaeology that we expect to be 10-15cm below the current ground surface.



Trench Locations

We are looking to identify two corners of the building to confirm its size. Trench one looks at the large anomaly to the North East and into the main building. Trench two is looking for the opposite corner and looking at structures in what appear to be internal spaces.

Given our limited time additional trenches may be added if resources and sufficient time is available to continue the work.

The Dig Committee have looked very carefully at the COVID implication along with IBM and have put in place measures which we hope will ensure a safe and secure dig this year.