

Geophysics

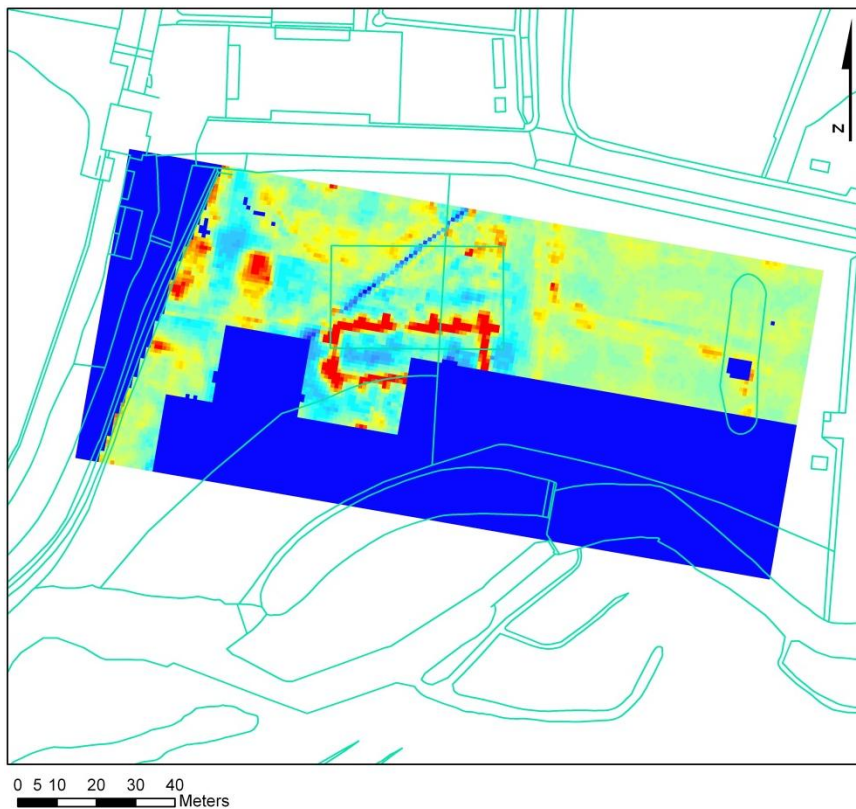
Earlier in the year, a small group of enthusiastic WARG members undertook some electrical resistivity (geophysics) measurements on the St. Elizabeth Mead site. Over three days the whole area where we hope to dig was surveyed, despite dubious weather, and all our objectives were achieved.

Many thanks to Winchester University for the loan of the equipment, and to David Ashby for the expertise.



Presented here are the plots for you to get your teeth into. Note the structures to the north and possibly west of the chapel itself.

Firstly in colour:



And in glorious Black & White, sometimes images are better examined like this:



Some features are worth a mention. Both sewage pipes, the operational one which cuts the north-west corner of the chapel, and the old one (the fainter line) which we exposed in a couple of trenches in 2011, are very clear, together with the chapel itself with its massive west-end buttresses.

To the east are a number of linear features, such as the north-south feature which we believe to be a roadway, but there are other possible targets for us to examine.

To the west, and adjacent to the stream which runs through Winchester College, are possible structures which may be much later than the chapel, but nonetheless interesting from an archaeological viewpoint.